

SportDesign Package (I-no. XAT)

Concern: **Retrofitting**

Model Year: **As of 2017**

Note:



The SportDesign package comprises the following components, which will be painted in standard/special series/custom color:

- SportDesign front apron
- New upper part of rear spoiler

On GTS vehicles, only the upper part of rear spoiler must be replaced because these vehicles come with the SportDesign front apron as standard.

The SportDesign package is also available straight from the factory for new vehicles by requesting optional equipment "XAT".



Information

The new upper part of rear spoiler must be used for the C2/C2S

- **only** together with the lower part of rear spoiler 991.504.205.26

for the C4/C4S

- **only** together with the lower part of rear spoiler 991.504.205.27.

The lower part of rear spoiler required for installation was installed from week 45/2016.

Replace lower part of rear spoiler if necessary. For more information, see point 2.2 in the Installation and Conversion Instructions.

Parts Info:	991.044.803.70	⇒ SportDesign package, set for basic vehicle
	991.044.803.71	⇒ SportDesign package, set for vehicles with headlight cleaning system = headlight washer system (I-no. 288)
	991.044.803.72	⇒ SportDesign package, set for vehicles with ParkAssist (I-no. 636)
	991.044.803.73	⇒ SportDesign package, set for vehicles with headlight washer system (I-no 288) and ParkAssist (I-no. 636)

May also have to be ordered, depending on vehicle type.

991.504.205.26	1 x	Lower part of rear spoiler for C2/C2S
991.504.205.27	1 x	Lower part of rear spoiler for C4/C4S
991.504.375.00	4 x	Adjusting elements

Parts List:

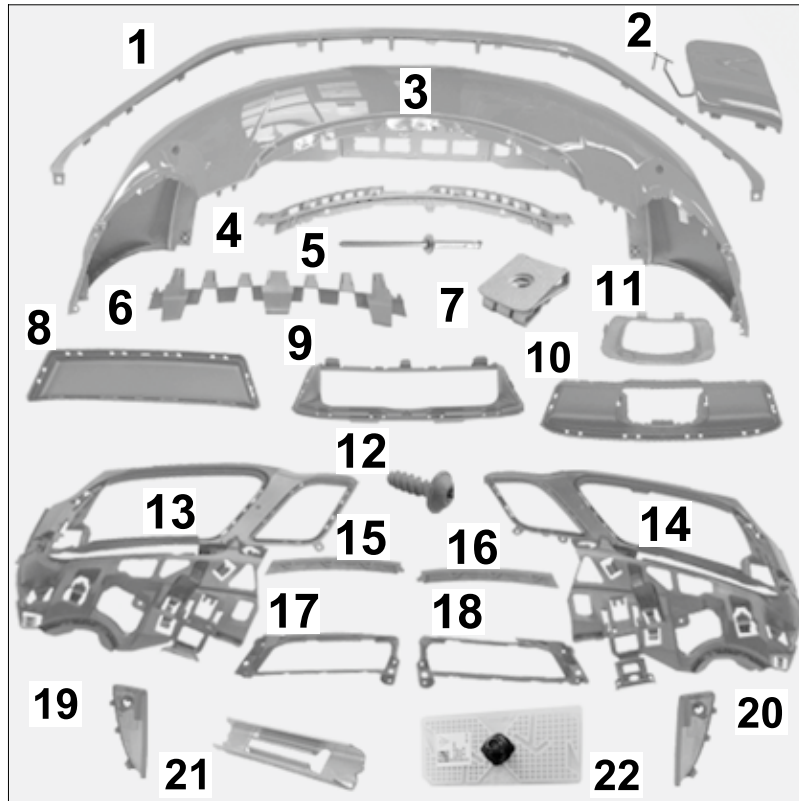


Figure 2

991.505.983.04.G2X	1 x	Spoiler lip –prime coated– ⇒ <i>Figure 2-1-</i>
991.505.903.00.G2X	1 x	Towing lug cover –prime coated–, ⇒ <i>Figure 2-2-</i>
— — — 1	1 x	ASSY ² Front apron –prime coated–, basic (not shown),
— — — 1	1 x	ASSY ² Front apron –prime coated–, I-no. 288 (not shown),
— — — 11	1 x	ASSY ² Front apron –prime coated–, I-no. 636 (not shown),

— — —	1 x	ASSY ² Front apron –prime coated–, I-no. 288 and 636 ⇒ <i>Figure 2-3-</i>
— — —	1 x	Upper trim panel support ⇒ <i>Figure 2-4-</i>
999.190.191.30	3 x	Blind rivet, A3.2 x 17.0 ⇒ <i>Figure 2-5-</i>
991.505.940.00	1 x	Pedestrian protection insert ⇒ <i>Figure 2-6-</i>
999.507.309.02	6 x	Speed nut, ST 4.8 ⇒ <i>Figure 2-7-</i>
9A7.007.517.09	6 x	Tapping screw, ST 4.8 x 19 (not shown)
955.606.838.00	4 x	Tie-wrap, 4.5 x 200 (not shown)
991.505.989.00.1E0	1 x	Center retaining frame, closed ⇒ <i>Figure 2-8-</i>
991.505.989.03.1E0	1 x	Retaining frame, center, open (middle radiator = I-no. 153) ⇒ <i>Figure 2-9-</i>
991.505.989.01.1E0	1 x	Center retaining frame, open (Automatic distance control = ADC = I-no. 456) ⇒ <i>Figure 2-10-</i>
991.505.995.00.1E0	1 x	Center retaining frame trim, ADC ⇒ <i>Figure 2-11-</i>
999.919.246.01	14 x	Oval-head screw, 6.0 x 18.0 ⇒ <i>Figure 2-12-</i>
991.505.985.01.OK1	1 x	Side retaining frame –left– ⇒ <i>Figure 2-13-</i>
991.505.986.01.OK1	1 x	Side retaining frame –right– ⇒ <i>Figure 2-14-</i>
991.505.961.00.OK1	1 x	Support frame vane –left– ⇒ <i>Figure 2-15-</i>
991.505.962.00.OK1	1 x	Support frame vane –right– ⇒ <i>Figure 2-16-</i>
991.505.933.00	1 x	Support frame –left– ⇒ <i>Figure 2-17-</i>
991.505.934.00	1 x	Support frame –right– ⇒ <i>Figure 2-18-</i>
991.505.967.00.OK1	1 x	Retaining frame trim –left– (not shown)
— — —	1 x	Retaining frame trim –left– (636/638) ⇒ <i>Figure 2-19-</i>
991.505.968.00.OK1	1 x	Retaining frame trim –right– standard (not shown)
— — —	1 x	Retaining frame trim –right– (636/638) ⇒ <i>Figure 2-20-</i>
999.507.696.00	2 x	U-clamp 1.20-1.70 ⇒ <i>Figure 2-21-</i>
982.035.510.A	2 x	GSM/UMTS/LTE antenna (film antenna, 9ZC/9ZK) ⇒ <i>Figure 2-22-</i>
991.505.761.02	1 x	Retainer plate for headlight washer system –left– (not shown)
991.505.762.02	1 x	Retainer plate for headlight washer system –right– (not shown)

¹ **ONLY** contained in respective set!

² ASSY = assembly ⇒ prime coated front apron with riveted retaining strip (2 x), guides (2 x), glued-in holder for KESSY proximity sensor (1 x) **AND/OR** depending on equipment: ParkAssist sensor holder.

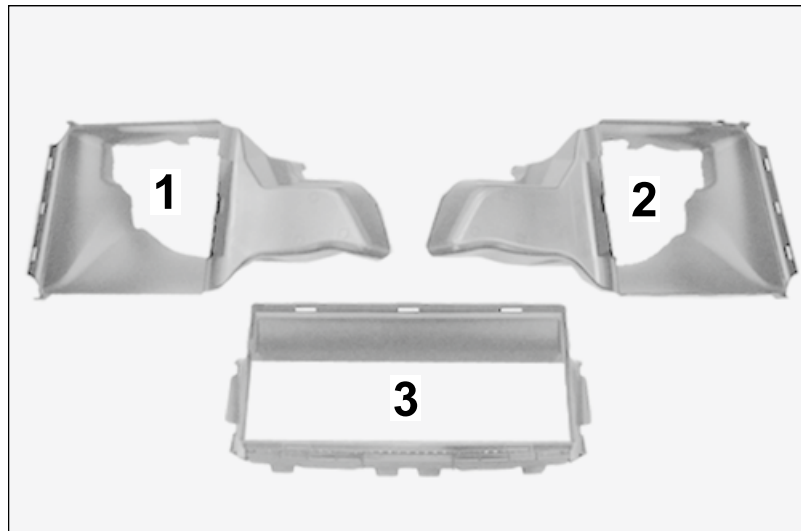


Figure 3

991.575.983.01.OK1	1 x	Air guide –left–, black ⇒ <i>Figure 3-1-</i>
991.575.984.01.OK1	1 x	Air guide –right–, black ⇒ <i>Figure 3-2-</i>
991.575.985.00.OK1	1 x	Air guide -center-, black (WITHOUT Automatic distance control = I-no. -456/WITH middle radiator = I-no. 153) ⇒ <i>Figure 3-3-</i>
991.575.985.01.OK1	1 x	Air guide –center–, black (456/153 – not shown)
991.505.977.00	1 x	Foam part for pedestrian protection (not shown)

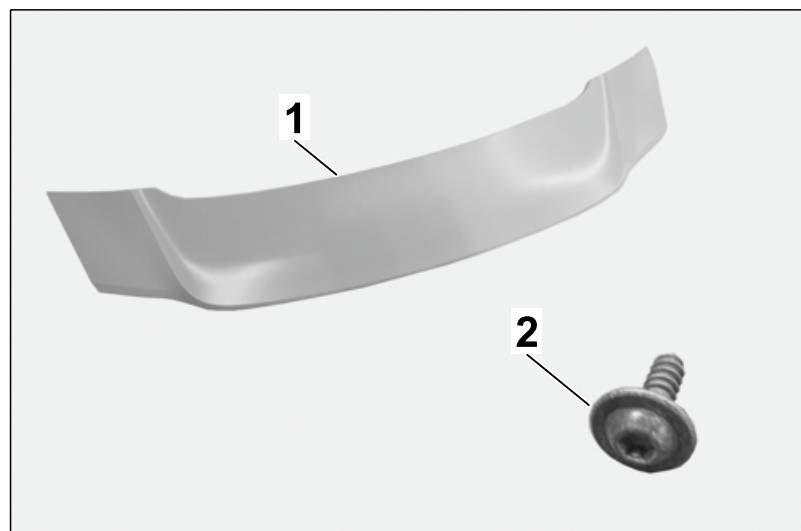


Figure 4

991.504.981.23 G2X	1 x	Upper part of rear spoiler, prime-coated ⇒ <i>Figure 4-1-</i>
N .909.868.03	6 x	Round head screw, ST4,2 x 13 ⇒ <i>Figure 4-2-</i>

Materials:	000.043.300.47	1 x	Adhesive including 5-part mixing tube (headlight washer system holder)
	— — — —	— —	Cleaning cloth (commercially available)
	— — — —	— —	Isopropanol (commercially available)
	— — — —	— —	Silicone spray (commercially available)
	— — — —	— —	Shrink-fit hose, 1.0 mm ² (commercially available)
	— — — —	— —	Wrapping/insulating tape (commercially available)

Tools:

- Nr. 90 Pos. 1 - Torque wrench**
- Nr. 124-1 - Hand riveting tool for pop rivets**
- 9900 - PIWIS Tester 3**
- T10118 - Assembly tool**

Work Procedure: 1 Preparatory work:



Painting components

- Risk of warping of components
 - Risk of damage to components
- ⇒ Observe the guidelines and instructions for painting components in the "Paint" Workshop Manual.
- ⇒ Always place parts without tension on the painting devices provided during painting and drying processes.

- 1.1 Paint all ready-primed parts to match the vehicle's color code in accordance with instructions in the Paint Workshop Manual.
- 1.2 Connect battery charger. ⇒ *Workshop Manual '2X00IN Battery trickle charging'*
- 2 Replace upper part of rear spoiler.
 - 2.1 Remove upper part of rear spoiler. ⇒ *Workshop Manual '66581906 Removing and installing upper part of rear spoiler'*
 - 2.2 Check whether the lower part of rear spoiler to be used is installed:
C2/C2S: Is Part No. 991.502.205.26 installed?
C4/C4S/GTS: Is Part No. 991.502.205.27 installed?
No: Continue with Step 2.3
Yes: Continue with Step 2.4.
 - 2.3 Replace lower part of rear spoiler.

- 2.3.1 Remove additional brake light from rear spoiler.

Disconnect plug connection ⇒ *Figure 5-1-*.

Insert a suitable tool in between the additional brake light and lower part of rear spoiler. ⇒ *Figure 5-arrows-*.

Unclip additional brake light by turning the tool slightly.

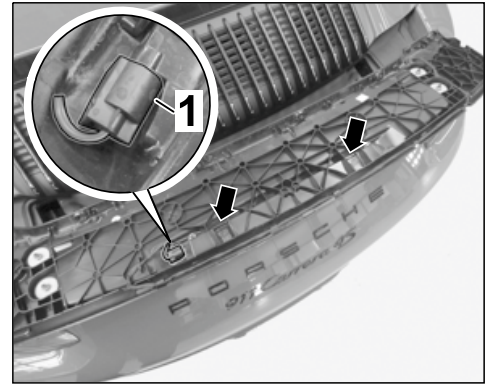


Figure 5

- 2.3.2 Remove lower part of rear spoiler.
⇒ *Workshop Manual '66581909 Removing and installing lower part of rear spoiler'*



Information

Some of the repair illustrations show only one side of the vehicle. Naturally, some steps also have to be performed on the opposite side of the vehicle as well. These must be carried out as a mirror image of the steps shown.

- 2.3.3 Measure the distances between the end of the thread ⇒ *Figure 6-1-* and the top of the hexagon nut ⇒ *Figure 6-2-* from all four standard adjusting elements and write them down.

X – Distance

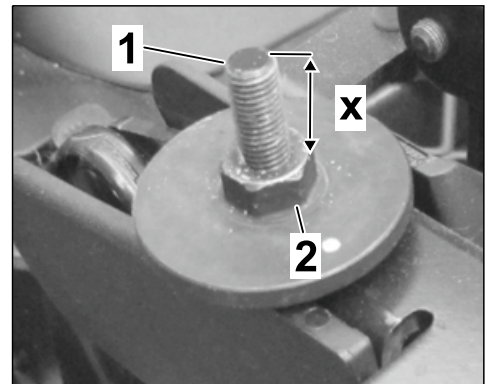


Figure 6

2.3.4 Remove standard adjusting elements.



Information

If there is no screw-locking agent on the thread of the adjusting elements, apply liquid screw-locking agent, e.g. "Loctite", before use.

Fit new adjusting elements at the left ⇒ *Figure 7* -arrows- and right and set them according to the dimensions you wrote down.

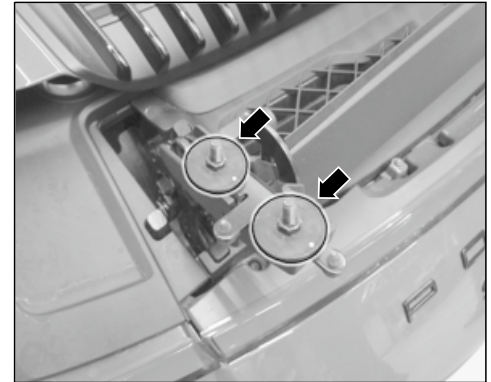


Figure 7

2.3.5 Install lower part of rear spoiler. ⇒ *Workshop Manual '66581909 Removing and installing lower part of rear spoiler'*

2.3.6 Install additional brake light in rear spoiler.

Carefully push additional brake light into the lower part of rear spoiler until the additional brake light engages securely.

Connect plug connection.

2.4 Install upper part of rear spoiler. ⇒ *Workshop Manual '66581906 Removing and installing upper part of rear spoiler'*

3 Install SportDesign front apron. ⇒ *Installation and Conversion Instructions '631500 SportDesign front apron (I-no. XAS)'*

NOTICE

Voltage drop

- Risk of irreparable damage to control unit
 - Risk of damage to control unit
 - Fault entries in the control unit
 - Coding in the control unit is aborted
 - Malfunctions in control unit, even during programming
- ⇒ Before disconnecting the control unit, switch off ignition and remove ignition key.
- ⇒ Make sure that the power supply is not interrupted during programming.
- ⇒ Connect battery charger/power supply - Suitable for AGM Type batteries, recommended current rating of 70A fixed voltage 13.5V to 14.5V.

**Information**

The **9900 - PIWIS Tester III** instructions take precedence since the description may be different with later Tester releases.

The procedure described here has been structured in general terms; different text or additions may appear on the **9900 - PIWIS Tester III**.

- 4 Code SportDesign package.
 - 4.1 **9900 - PIWIS Tester 3** must be connected and ignition switched on.
 - 4.2 Select "Diagnostics". **9900 - PIWIS Tester 3** detects the model line.
Press Next. PIWIS Tester III Diagnostics starts.
 - 4.3 Update vehicle data.
 - 4.3.1 **Additional menu** must be selected by pressing **•F7"** . Press **•F11"** to confirm the question "Create vehicle analysis log (VAL)?".
 - 4.3.2 Select the **Maintenance of vehicle data** function. Press **•F12"** until X numbers appears in the Value group column.
 - 4.3.3 **Only** for vehicles with SportDesign front apron (XAS):
Select coding value **XAS - Sport Design front apron**. Touch the **Installed** cell after the coding value (the tick disappears).
 - 4.3.4 Select coding value **XAT - Sport Design package**. Touch the **Installed** cell after the coding value (a tick appears).
Press **•F12"** to change values.
 - 4.3.5 Press **•F12"** until **•F8"** can be activated.
 - 4.3.6 The selected values appear. Press **•F8"** to write values. Wait until the following message appears: **Generation of vehicle data is complete. Press**
Press **•F11"** to switch to the control unit overview.
 - 4.4 Adapt coding.
 - 4.4.1 Select all control units by pressing **•Ctrl A"** . Press **•F12"** to continue.
 - 4.4.2 Switch to the **Coding/programming** menu. Press **•F12"** to continue.
Select **Automatic coding** mode. Press **•F12"** to continue.
 - 4.4.3 Wait until the following message appears: **Coding was completed successfully.**
Press **•F12"** to continue.
Press **•F12"** to return to the **Overview** menu.
 - 4.5 Read out the fault memory of all systems, correct any existing faults, and erase the fault memory. ⇒ *Workshop Manual '033500 Fault memory for on-board diagnosis'*
 - 4.6 Switch off ignition and disconnect **9900 - PIWIS Tester 3**.
 - 4.7 Disconnect the battery charger. ⇒ *Workshop Manual '2X00IN Battery trickle charging'*

66036191:	Front spoiler (spoiler lip), new part painted Includes: Materials: 4 MU Without: Paint preparation (separate LO No.)!	Labor time: 50 TU
63156191:	Front apron, new part painted Includes: Materials: 20 MU Without: Paint preparation (separate LO No.)!	Labor time: 160 TU
66586191	Upper part of rear spoiler painted Includes: Materials: 5 MU Without: Paint preparation (separate LO No.)!	Labor time: 70 TU
51017105:	Preparing body paintwork Includes: Order-based; New part painting Step 1; Plastic part	Labor time: 130 TU
66992340:	SportDesign package installed Includes: Removing and installing front apron, assembling new front apron and fitting new spoiler lip. Removing and installing upper part of rear spoiler.	Labor time: 313 TU
66581909:	Rear spoiler removed and installed Includes: Also for vehicles on which lower part of rear spoiler is replaced.	Labor time: 58 TU

Important Notice: Technical Bulletins issued by Porsche Cars North America, Inc. are intended only for use by professional automotive technicians who have attended Porsche service training courses. They are written to inform those technicians of conditions that may occur on some Porsche vehicles, or to provide information that could assist in the proper servicing of a vehicle. Porsche special tools may be necessary in order to perform certain operations identified in these bulletins. Use of tools and procedures other than those Porsche recommends in these bulletins may be detrimental to the safe operation of your vehicle, and may endanger the people working on it. Properly trained Porsche technicians have the equipment, tools, safety instructions, and know-how to do the job properly and safely. If a particular condition is described, do not assume that the bulletin applies to your vehicle, or that your vehicle will have that condition. See your authorized Porsche Dealer for the latest information about whether a particular technical bulletin applies to your vehicle. Part numbers listed in these bulletins are for reference only. Always check with your authorized Porsche dealer to verify the current and correct part numbers. The work procedures updated electronically in the Porsche PIWIS diagnostic and testing device take precedence and, in the event of a discrepancy, the work procedures in the PIWIS Tester are the ones that must be followed.

© Porsche Cars North America, Inc.

Dr. Ing. h.c. F. Porsche AG is the owner of numerous trademarks, both registered and unregistered, including without limitation the Porsche Crest®, Porsche®, Boxster®, Carrera®, Cayenne®, Cayman®, Macan®, Panamera®, Speedster®, Spyder®, Tiptronic®, VarioCam®, PCM®, PDK®, 911®, RS®, 4S®, 718®, 918 Spyder®, FOUR UNCOMPROMISED®, and the model numbers and distinctive shapes of the Porsche automobiles such as, the federally registered 911 and Boxster automobiles. The third party trademarks contained herein are the properties of their respective owners. Porsche Cars North America, Inc. believes the specifications to be correct at the time of printing. However, specifications, standard equipment and options are subject to change without notice. Some options may be unavailable when a car is built. Some vehicles may be shown with non-U.S. equipment. Please ask your authorized Porsche dealer for advice concerning the current availability of options and verify the optional equipment that you ordered. Porsche recommends seat belt usage and observance of traffic laws at all times.

Printed in the USA